

# **Eco Bee Box**

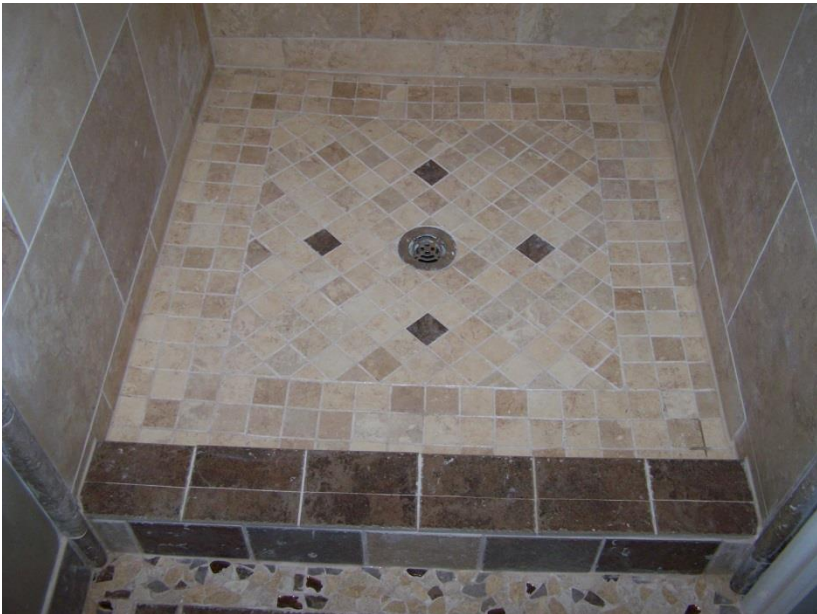


**Bees Changed My Life**



## **Albert Chubak**

**Founder & CEO  
Eco Bee Box llc.  
Eco Hive Solutions Co.  
801-654-9700  
albert@ecobeebox.com**



# First Hive



**What is a swarm?**

**Where did they come from?**

**How long have they been there?**

**Why did they swarm?**

**When is best to collect them?**



**One is a swarm, one is not**



# Swarm







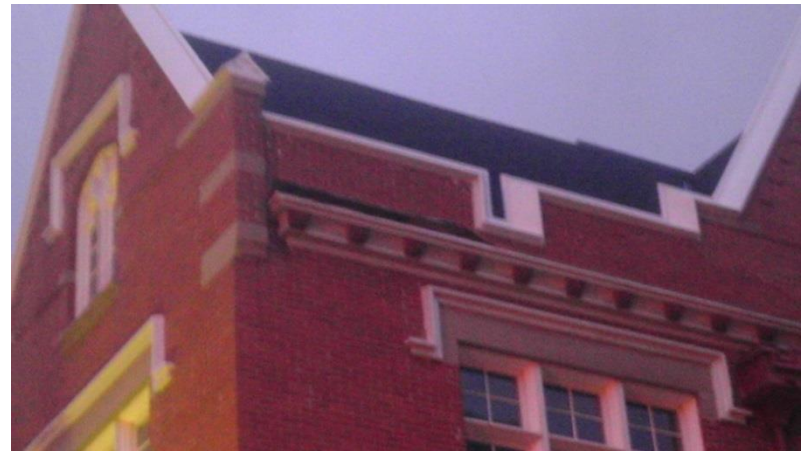


# **THE WRONG WAY: REMOVING BEES**

[Dumb, dumb, dumb, dumb.](#)

Start at :30

# Why is it there?





How Long Has it Been There?





# Any Hives Closeby?



# Questions to ASK?

- Anything flowering
- Is it a ball, what size
- Is it grey or white
- Do the bees have yellow on them
- How long have they been there
- Have you seen them there before
- Have anyone sprayed them with anything
- Is it on your property
- Has anyone else been called
- Do you know a beekeeper close
- How did you know to call me

# Risks

- You know nothing of this colony
- Disease
- Pesticides
- Fleeing mites
- Aggressive
- Swarming trait
- Is there a queen
- Your skills
- Your equipment
- Are you prepared
- Where do they want to be
- Water source
- Food supply
- Shade





## Rules of Swarms and Cut-Outs

### Don't...

- ...put capped honey or sticky comb back in with the bees
- ...**bring bees back to your apiary initially**
- ...**touch anything until you have a waiver signed**
- ...**use equipment you are not familiar with**
- ...think everything is okay
- ...assume it is a swarm
- ...**forget to ask if they were sprayed**
- ...**forget to ask how long they have been there and if they were ever there before**
- ...**cut into any structural supports, wires or plumbing**
- ...**travel with beehives open**

### Do...

- ...ask if they have yellow
- ...ask for them to send a photo of one or a group of them
- ...take comb with eggs and larva
- ...ask if they are on blossoms
- ...**know your risks**
- ...**understand bee diseases**
- ...learn from each job, and use every job as a teaching moment
- ...be prepared (equipment)
- ...**be thorough**
- ...take pictures
- ...have a hive ready, don't put it together right then
- ...have options available
- ...have a feeder source ready
- ...know the bee season
- ...**be safe first**
- ...have a water source ready

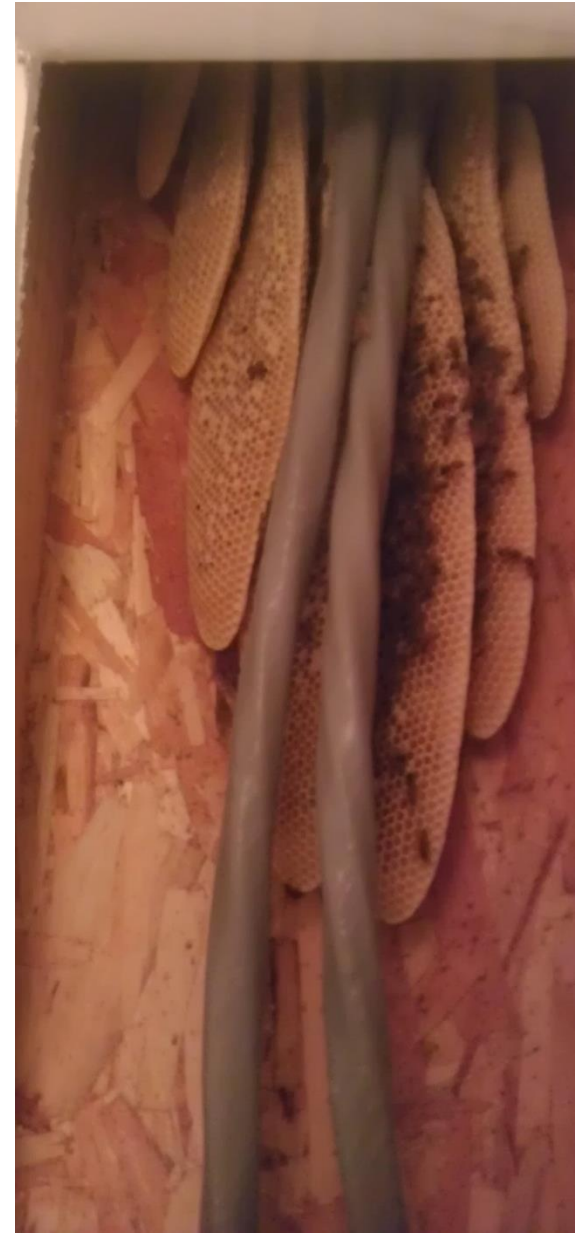
# What has to be done?

- Tree
  - How high
  - How big
  - It is hollow
  - Trap out
  - Kill
- Building
  - Electrical
  - Plumbing
  - Support
  - Cheapest way
  - Repair
  - Ladder
  - Damage
  - Kill

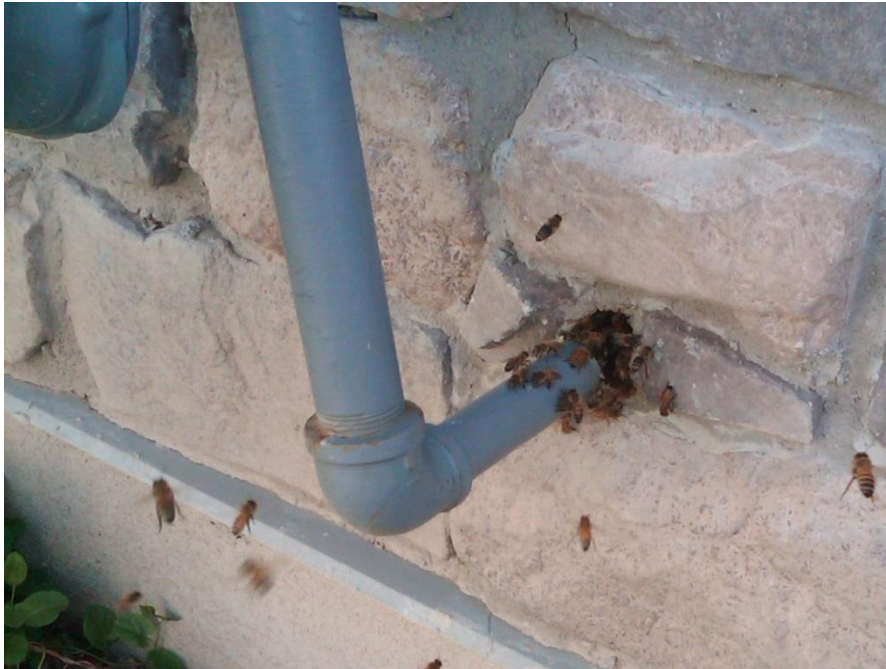


































## Cut-outs with Mini Equipment





If killed, what then?



# Tree Removal









