

Queen Training Slides



The Garden Academy

Series: Beekeeping

Unit: Queen Training

Finding the Queen

- The more your eyes get used to landing on the queen, the faster you will be able to find her during hive inspections.
- The queen will often be moving, but training yourself to recognize her on still pictures will still make you better at locating her.
- She is often easier to see when she is moving. She is much larger than workers and when she moves quickly she leaves a wake of workers in her path.
- If she is laying, or not running from you, her movement is usually slow and graceful with a noticeable retinue of attendants as seen in many of these images.
- Move from slide to slide, and see how fast you can find her. Some are very easy. Others are more of a challenge.

What to expect on the slides

- There is a queen in every image
- Some images contain more than one queen
- Queens are different colors – you will see blondes, brunettes, and redheads
- Some queens are marked, others are not
- Some queens are presented full length
- Some queens are partially covered, but recognizable
- Some queens are in laying position
- Some queens are turning toward you, away from you, are in the shadows, or are on the edge of a frame

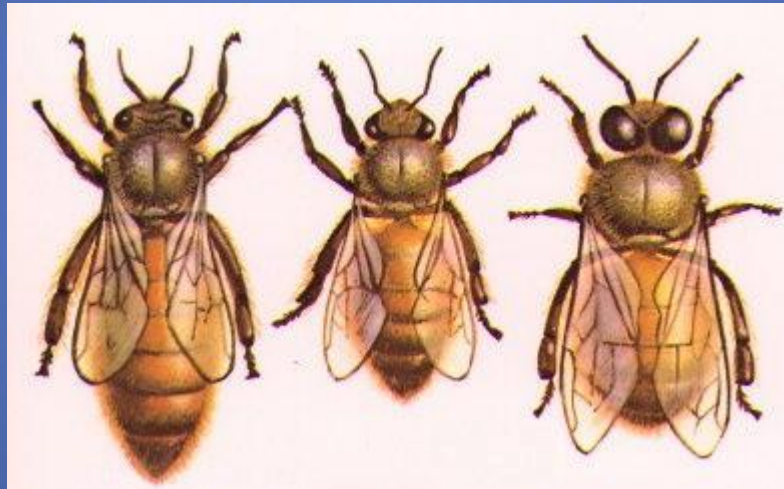
What you can do with these slides

- These slides are all public domain images – Facebook, emails I have received, non-copyrighted webshots. One queen cell image has a photo credit.
- This file is in a PDF format.
- I will update this occasionally and reload it to my website.
- I do not sell anything, and my website does not collect contact info – there is no spam attached to this.
- I have not copyrighted this – use as you wish. My website content is copyrighted – all rights reserved - but I release all rights to “Queen Training Slides”

Mentors and Beeks

- Mentors – you may pass this on to your interns as you see fit
 - If you need the Power Point program for training or teaching, I will email it to you
 - You may add your own images to the program
 - I have back-saved this to a previous version of Power Point to make it more accessible
 - I do not provide Power Point training – ask a friend
- If you have an image you would like to donate to the cause, please post it to my Facebook page www.facebook.com/thegardenacademy or email it to achandler@thegardenacademy.com

Differences in Bees



Queen – Worker - Drone

Queen Body Profile



Queen Emerging



Photo Credit: In Image



































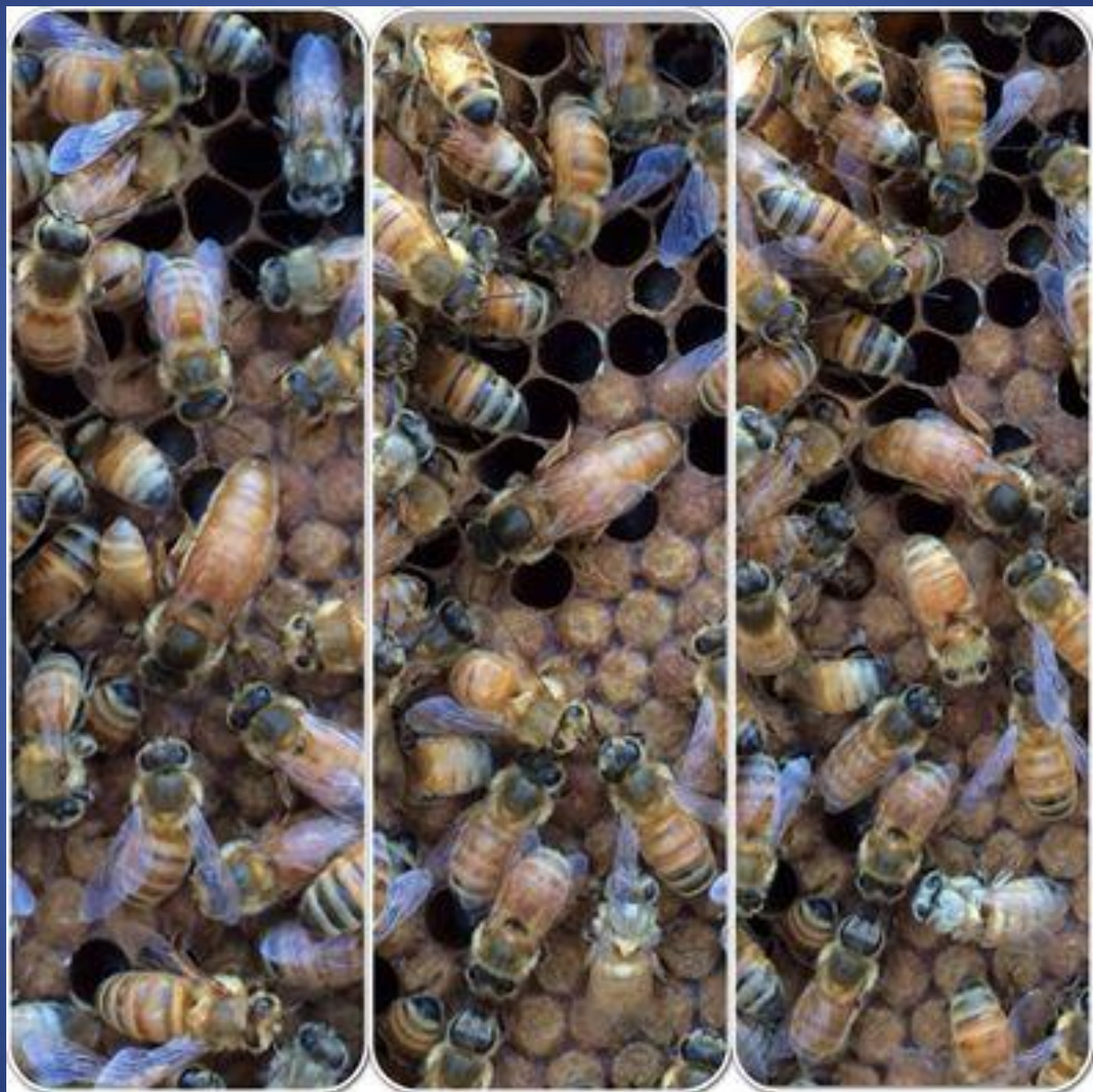




































2015/03/15 17:53





























































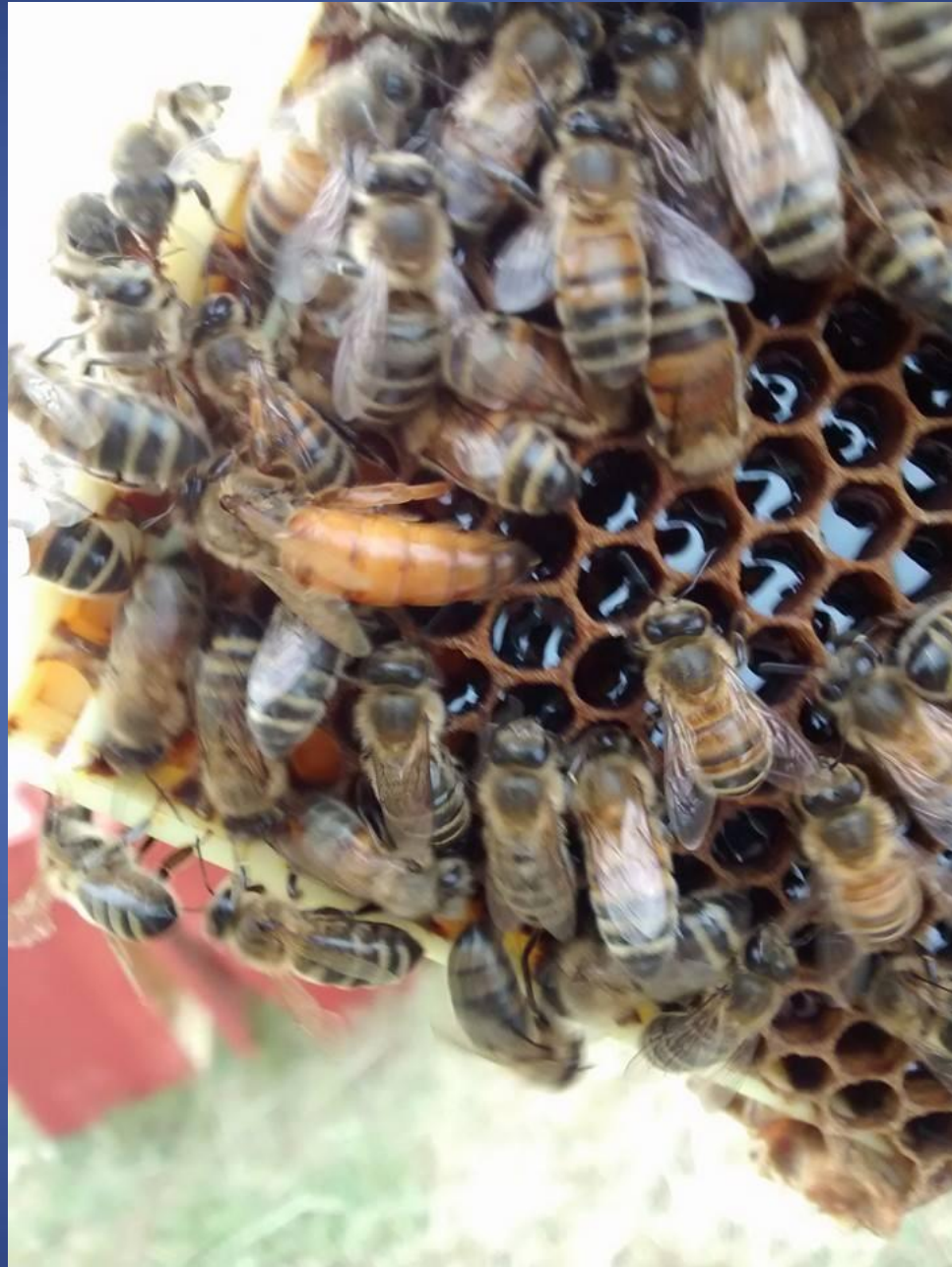




































Contact Us

- Website:

www.thegardenacademy.com

- Email:

achandler@thegardenacademy.com

- Facebook:

www.facebook.com/thegardenacademy